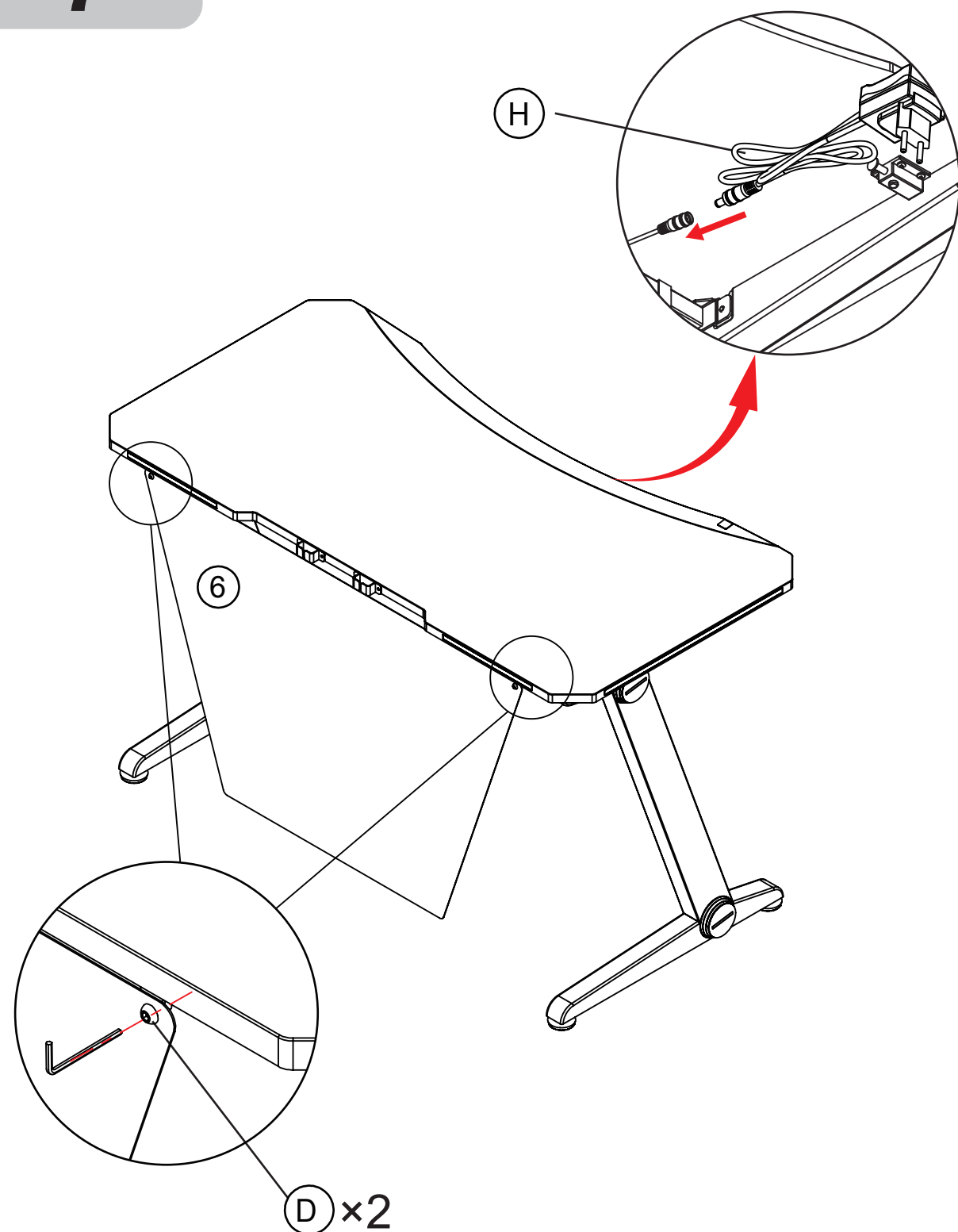


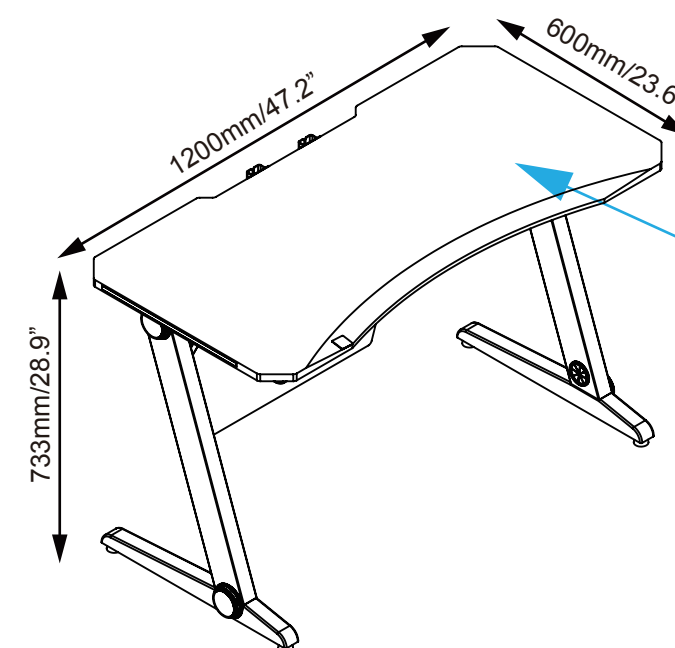
7



Use (D) (×2) to install baffle (6)  
Insert the power cord (H) into the connector under the table  
Then the desk is ready to use.

## Monochrome Version Gaming Desk

### MOUNTING INSTRUCTIONS

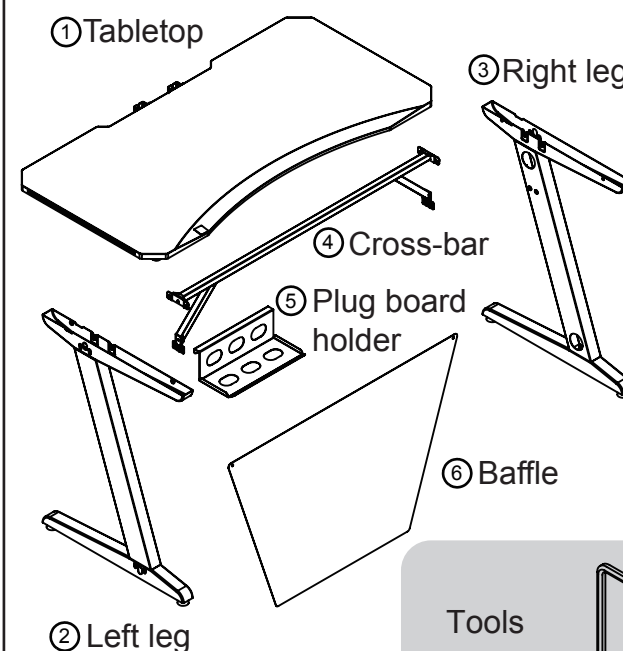


kg LB ≤80kg (≤176.4lbs)

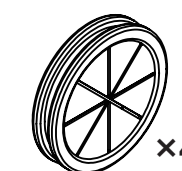


CAUTION : DO NOT EXCEED  
MAXIMUM LISTED WEIGHT  
CAPACITY. SERIOUS INJURY  
OR PROPERTY DAMAGE MAY  
OCCUR.

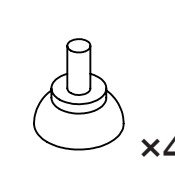
## PARTS LIST



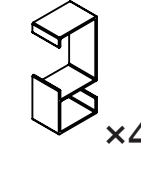
A) Cable hole B) Adjustable pad C) Cable clamp



×4

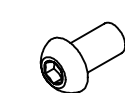


×4



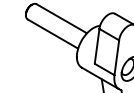
×4

D) M6×12mm



×6

E) Knob



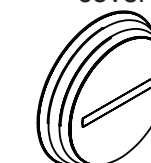
×2

F) Cable clamp



×2

G) Decorative cover



×4

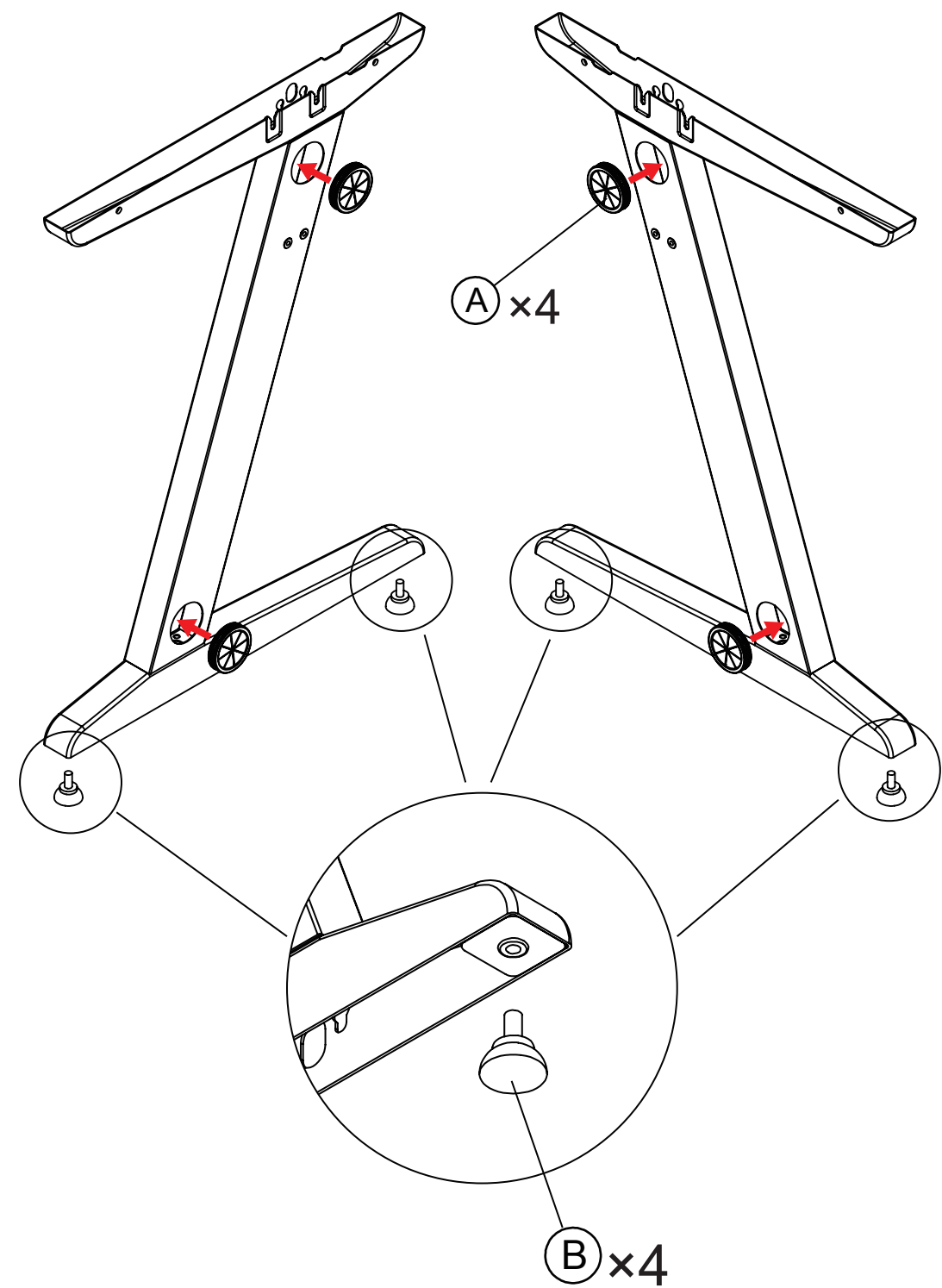
H) Power cord



×1

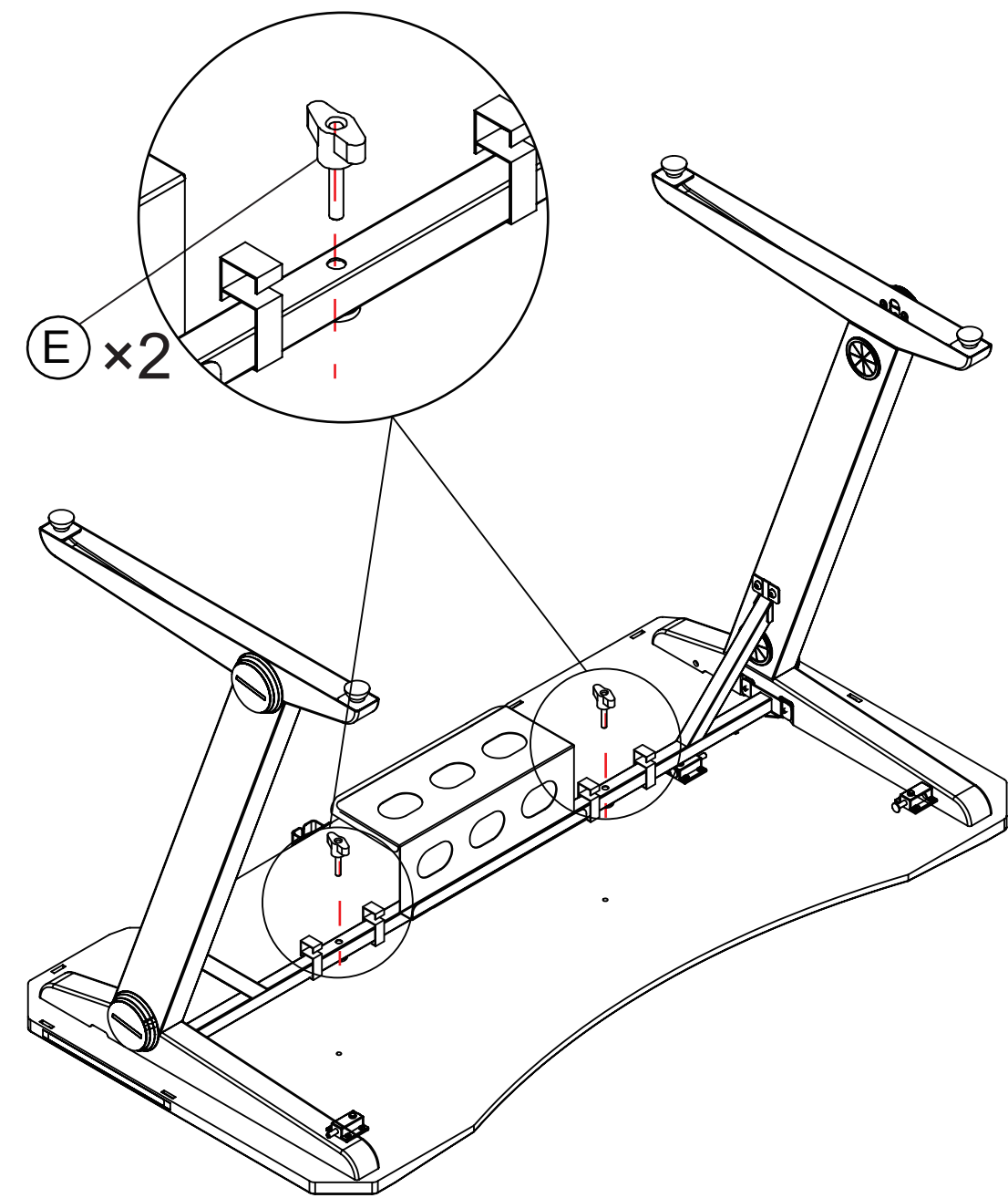
# INSTALLATION STEPS

1



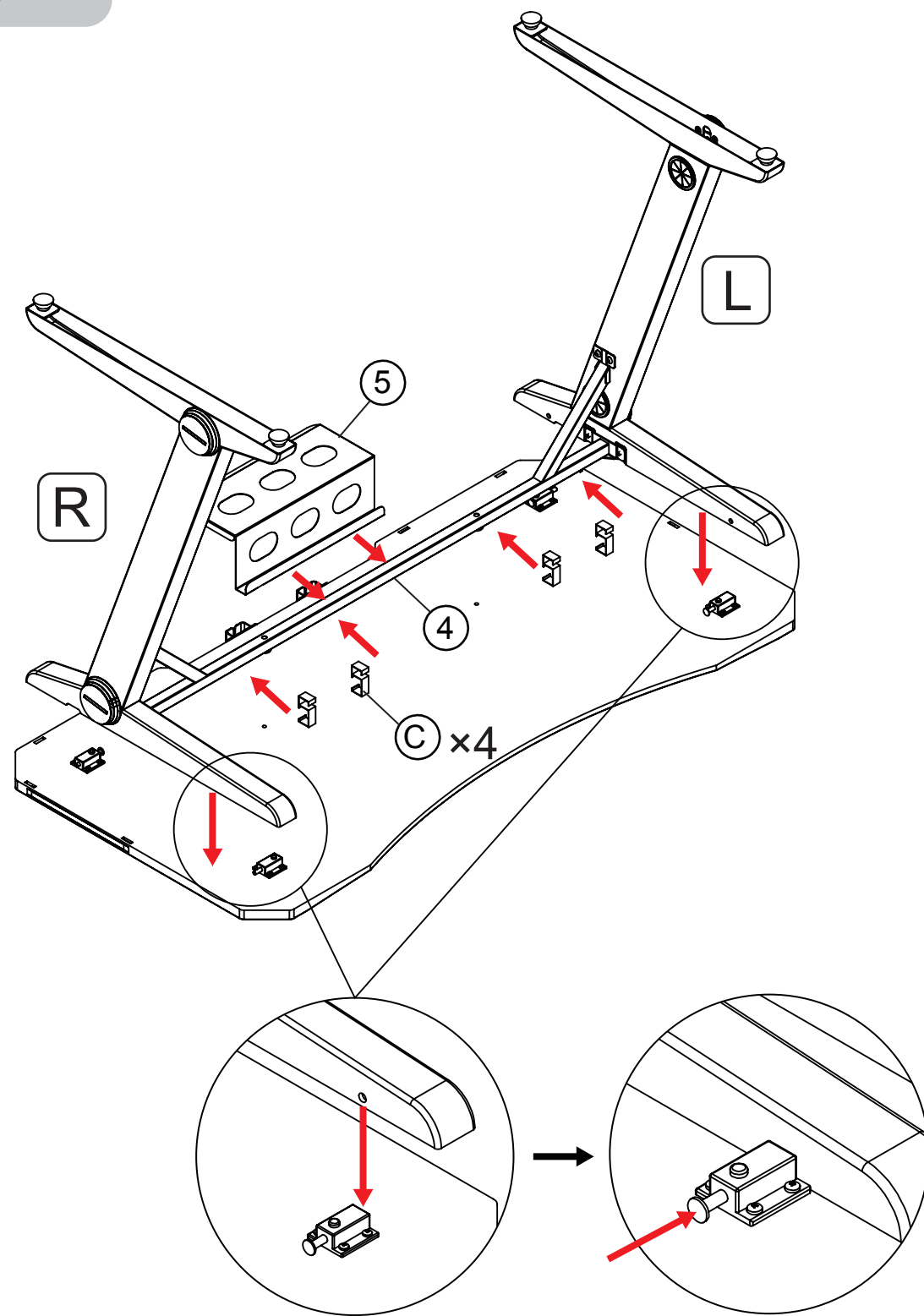
Put cable hole (A) (x4) into the hole  
Swirl adjustable pad (B) (x4) into the hole

6



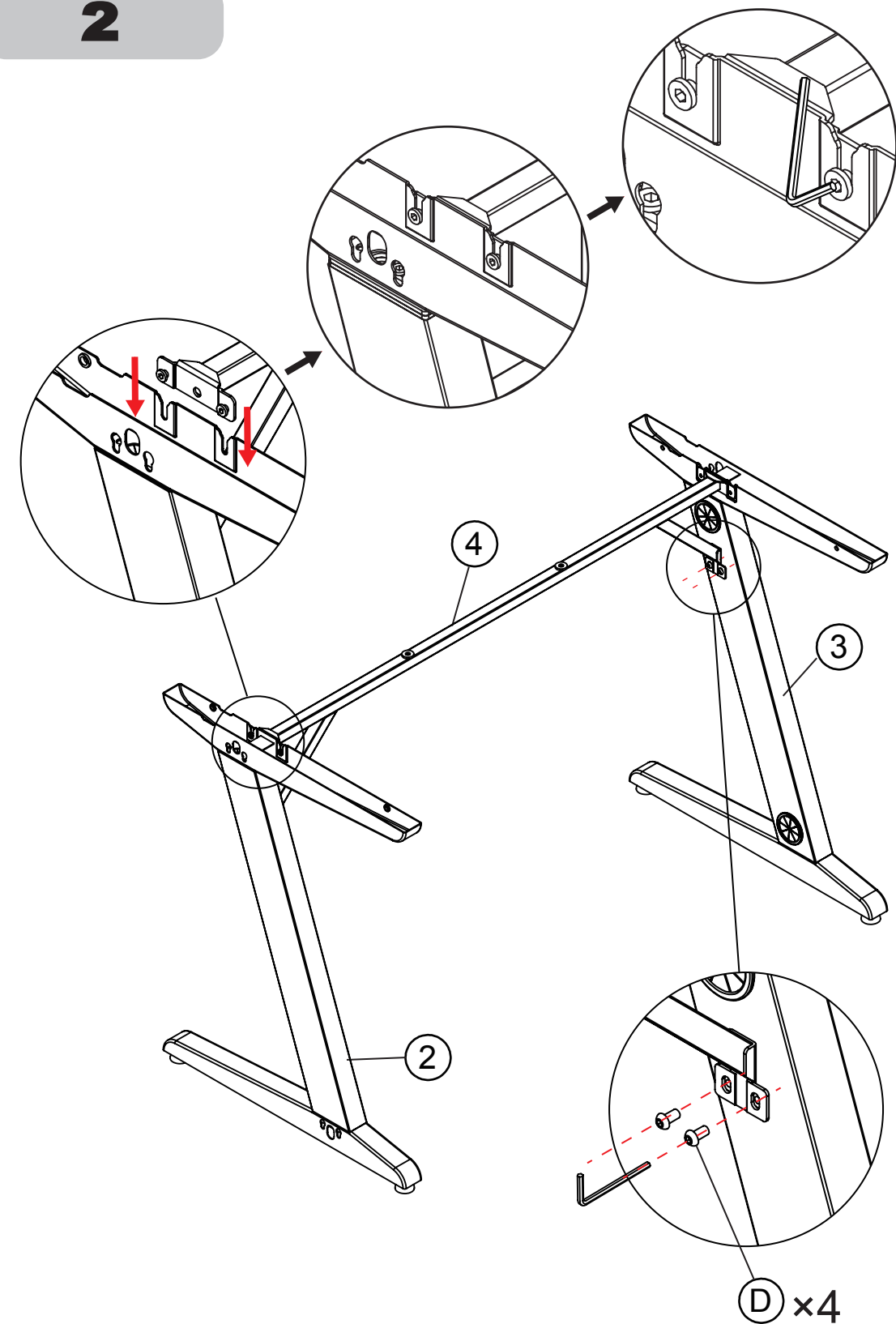
Tighten (E) (x2) to fix the cross bars and the tabletop

5



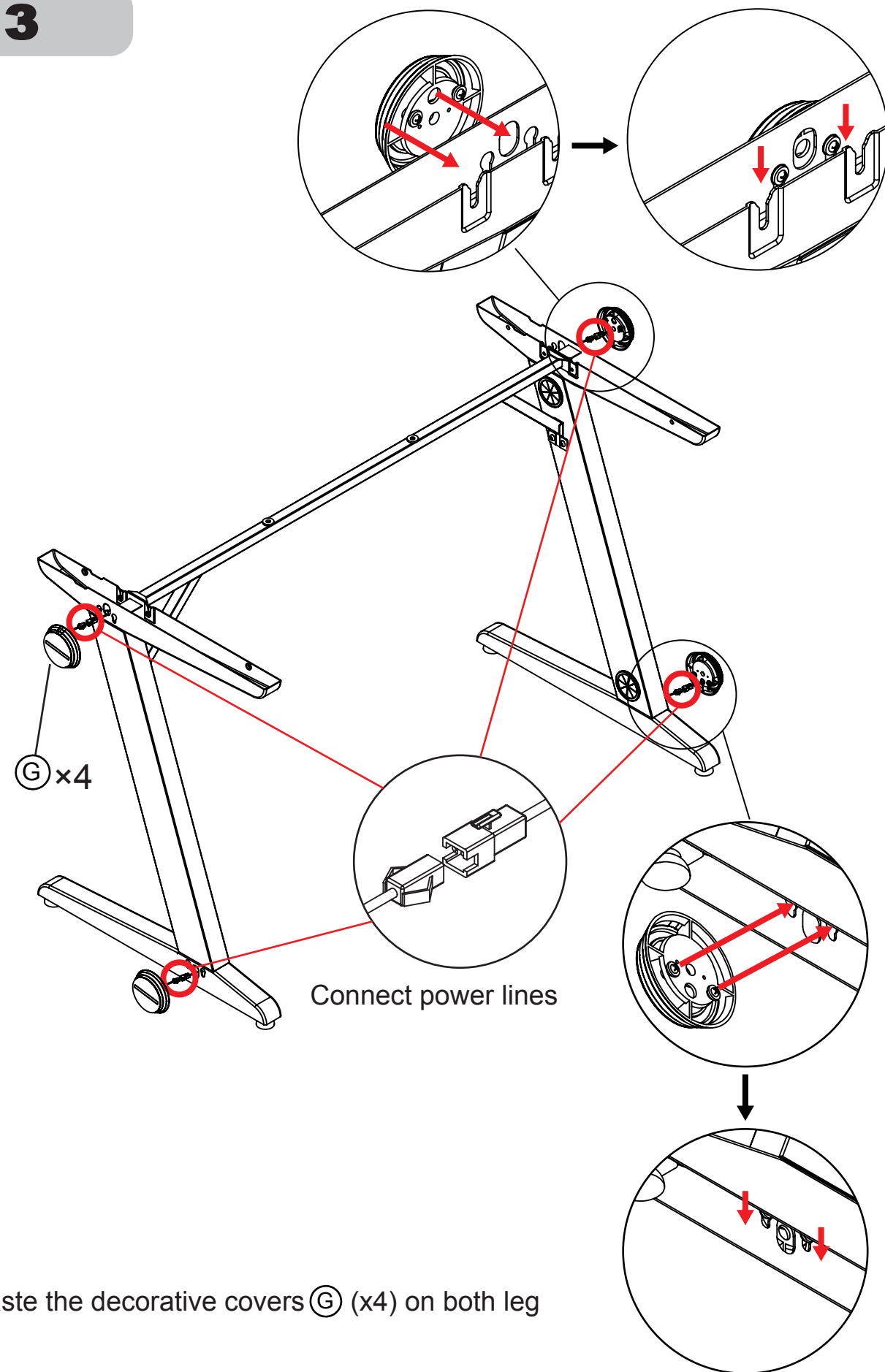
Hang plug board holder (5) and cable clamps (C) (x4) on cross-bar (4)  
Gently press the spring bolt lock, the desktop can be installed

2

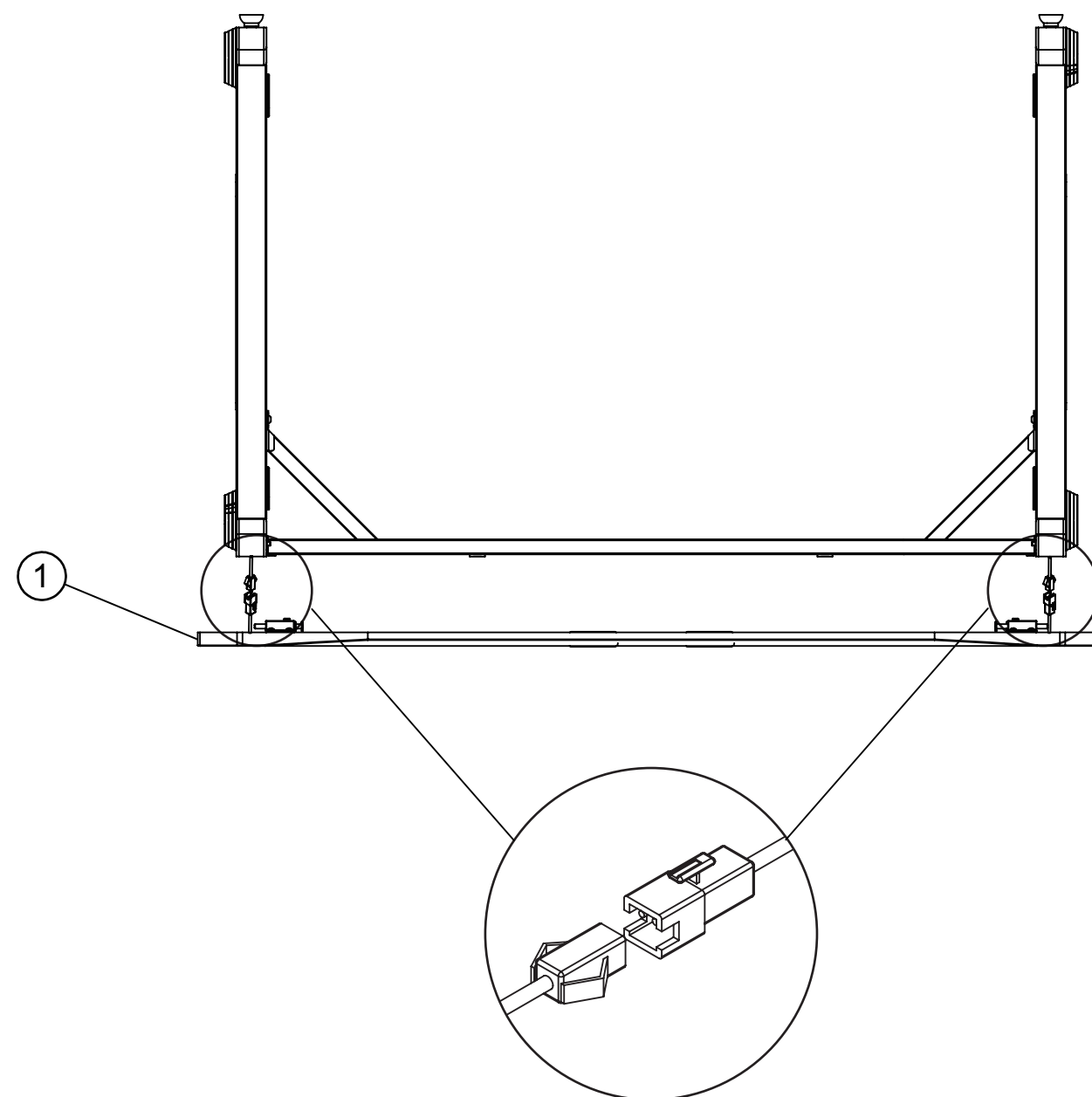


Use (D) (x4) to connect the left leg (2) & right leg (3) with cross-bar (4)  
Tighten the screws on the cross-bar with an allen key

3



4



Connect power lines between tabletop ① and both legs



If the external flexible cable or cord of this luminaire is damaged, it shall be exclusively replaced by the manufacturer or his service agent or a similar qualified person in order to avoid a hazard.  
The light source contained in this luminaire shall only be replaced by the manufacturer or his service agent or a similar qualified person.